

# Engineering and Software

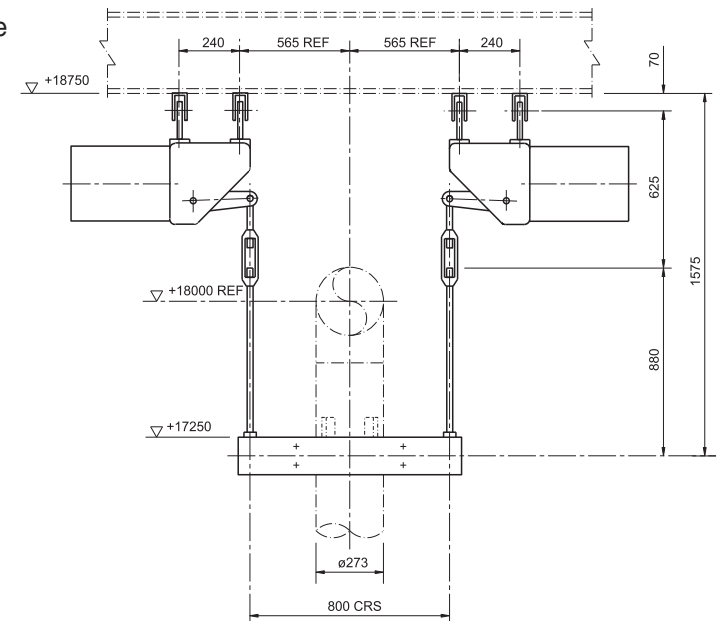
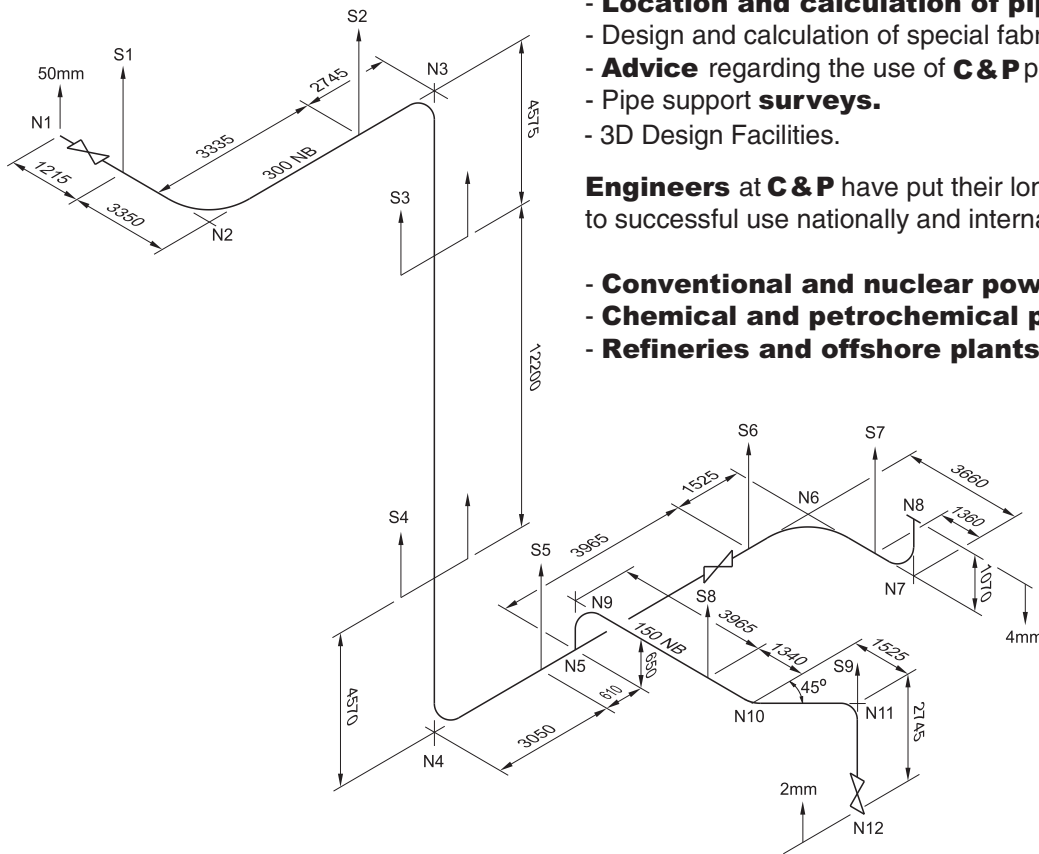


**A competent team of engineers** is at the disposal of customers of C&P. All matters dealing with the engineering of pipelines being considered:

- **Stress analysis** of pipeline systems.
- Determination of **pipe support configurations**.
- **Location and calculation of pipe hangers and supports**.
- Design and calculation of special fabrications.
- **Advice** regarding the use of **C&P** products.
- Pipe support **surveys**.
- 3D Design Facilities.

**Engineers at C&P** have put their long-standing experience to successful use nationally and internationally for:

- **Conventional and nuclear power plants.**
- **Chemical and petrochemical plants.**
- **Refineries and offshore plants.**



A major item in **engineering** and **production** at C&P is the design, calculation and manufacturing of special fabrications. Aside from its own ranges of **standard supports** **C&P** also manufactures specially designed fabrications for use in extraordinary circumstances, e.g. **extreme temperatures** and **loads** and other unusual applications. In addition **C&P** offers its clients the facility of custom-made manufacturing.

# Witch-Hanger Graphical Pipe Support Design Program



## Introduction to Witch-Hanger

Since 1991, Carpenter & Paterson have been providing customers with Variable and Constant effort spring selection software upon request. This software (entitled Vecesel) has provided a simple, time saving program for the selection of spring units.

Due to the program's popularity and customer feedback the software underwent major development to incorporate ancillary equipment and provide the ability to design complete support assemblies.

This new version of the software (entitled Witch-Hanger) was first released in 1994 and proved to be extremely popular due to its cost saving capabilities and user friendly design.

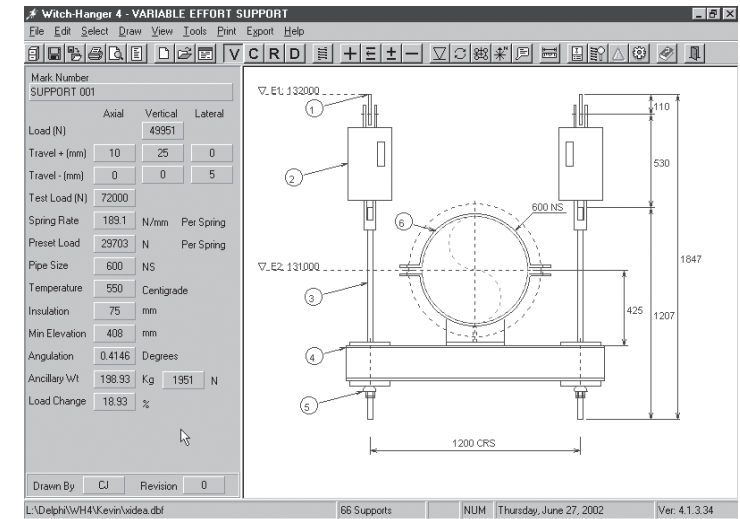
Since its first release the Witch-Hanger software has undergone many improvements and the new Version 4 makes support assembly design easier than ever before.

## Installation Hardware Requirements

- Windows® 9x, NT, 2000, XP
- 16 MB RAM (32 MB recommended)
- Pentium 133
- 2X CD-ROM Drive
- SVGA Colour Monitor
- 10 MB Hard disk space
- Mouse

## Description of Capabilities

- Complete design of support assemblies
- Single design screen
- Automatic selection of spring units
- Selection of Variable spring supports via Operating or Installed Loads
- Fully scaled output
- Typical or manual support selection
- Flexible design capabilities
- Inclusion of long travel constant effort spring units
- Measuring facility
- Provision for minimum rod sizes
- Comprehensive reporting facilities
- Revision management
- Output to DXF,DBF,TXT,CSV,JPG
- Email drawings via JPEG output format
- Print Preview
- Context sensitive help
- User friendly design



Updates to the Witch-Hanger program can now be downloaded from our web site at:

**[www.cp-ltd.co.uk/software](http://www.cp-ltd.co.uk/software)**

(Note: you must have a copy of the Witch-Hanger 4 software installed before applying updates)

**The "Witch-Hanger" Graphical design program is available free of charge. Please contact our sales department on +44 (0)1938 552061 for further information or a demonstration**