



# Carpenter & Paterson Ltd.

Crown Works, Welshpool, Powys SY21 7BE, U.K.

+44 (0)1938 552061 Fax: +44 (0)1938 555306/552818

email : [info@cp-ltd.co.uk](mailto:info@cp-ltd.co.uk)

web : <http://www.cp-ltd.co.uk/>

Doc No: INST.RST

## INSTALLATION INSTRUCTIONS

### ADJUSTABLE RIGID STRUTS

Rev	Date	By	Appv By	Pages Rev
0	10.01.00	NAS	BD	-

**INSTALLATION INSTRUCTIONS**  
**ADJUSTABLE RIGID STRUTS**

This procedure is applicable to Rigid Strut Fig No. RS3-RS600.

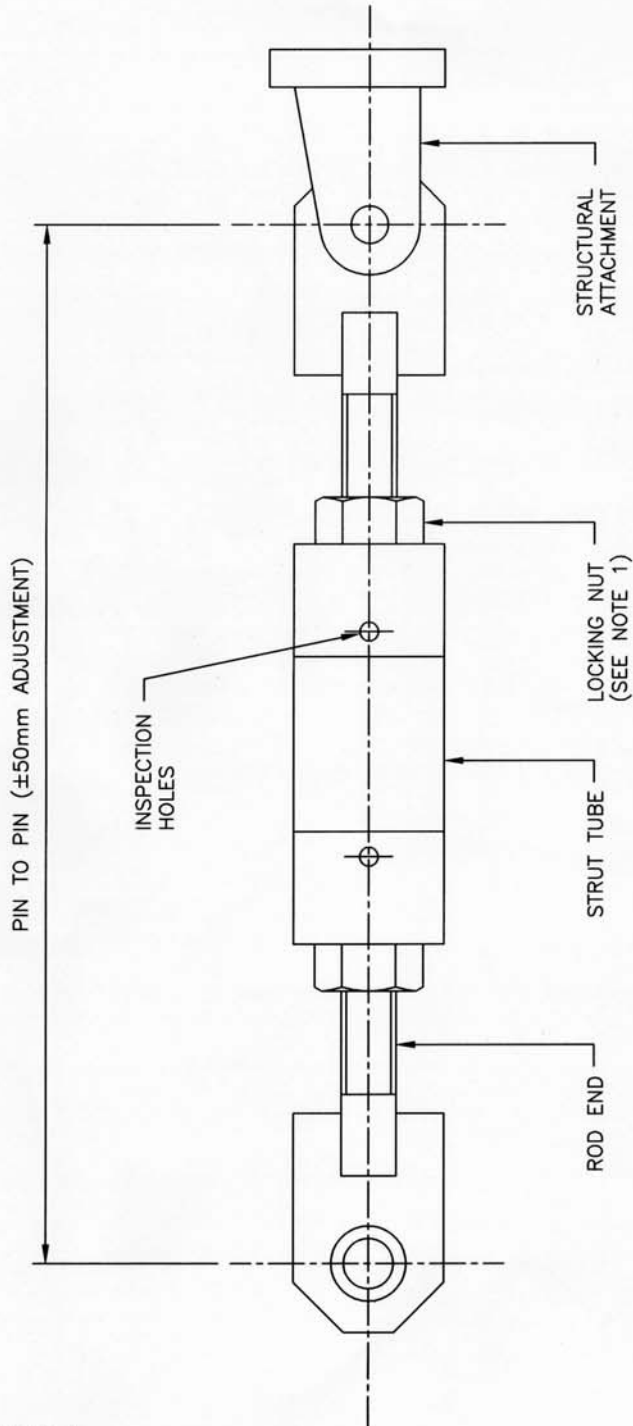
1. Check support mark number to pipe support drawing to ensure correct size and location of rigid strut assembly.
2. Slacken lock nuts at rod end / strut tube and back-off nuts sufficiently to allow for site adjustment.
3. Adjust each rod end by turning so that they protrude from the strut tube by equal amounts. Note: Rod ends have LH/RH threads.
4. To adjust the rigid strut length to the required pin to pin dimensions turn the strut tube whilst preventing the rod ends from turning, until the desired length is achieved.

Note: To ensure that each rod end thread is fully engaged on strut assembly check that the rod end thread is obscuring the inspection holes provided at each end of strut tube.

5. Tighten the locking nuts at rod end/strut tube to the specified torque value.

## RS3-RS600 ADJUSTABLE RIGID STRUTS

TO BE USED IN CONJUNCTION WITH STANDARD INSTRUCTIONS SUPPLIED WITH CONTRACT



STRUT SIZE	Q (KgF/M)	Q1 (KgF/M)
RS-3	2.1	2.1
RS-7	2.1	2.8
RS-15	4.8	9.0
RS-30	13.8	41.5
RS-55	13.8	41.5
RS-115	13.8	82.9
RS-160	13.8	138.2
RS-270	13.8	69.1
RS-360	13.8	69.1
RS-600	13.8	13.8

**NOTE 1:**

SET ADJUSTMENT AT DESIRED 'G' AND TIGHTEN NUTS TO NOMINAL TORQUE VALUE 'Q' FOR LOCKING. TO ACHIEVE PUBLISHED SPRING RATES, TIGHTEN NUTS TO TORQUE VALUE 'Q1'.

SPRING RATE IN TENSION

