

Ancillary Equipment



FIG. 381 SLIDING SUPPORT (WELDED TYPE)

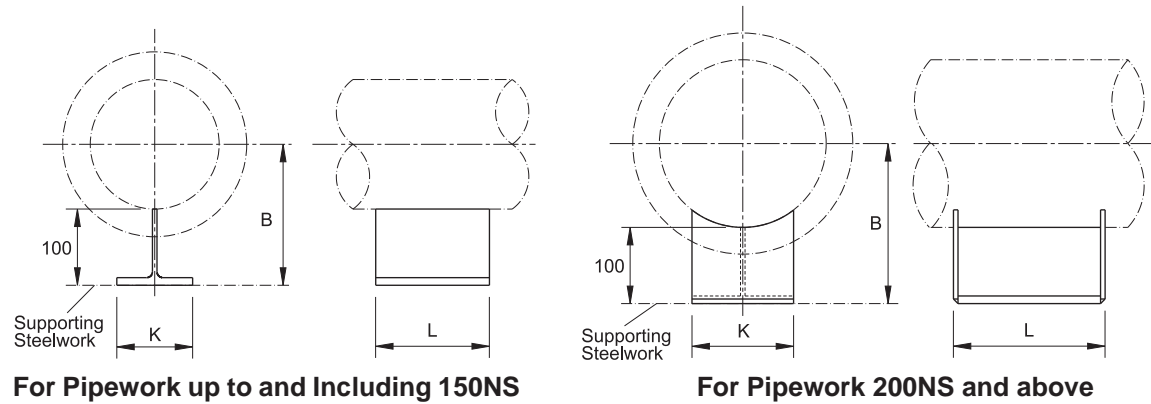


FIG. 382 SLIDING GUIDE (WELDED TYPE)

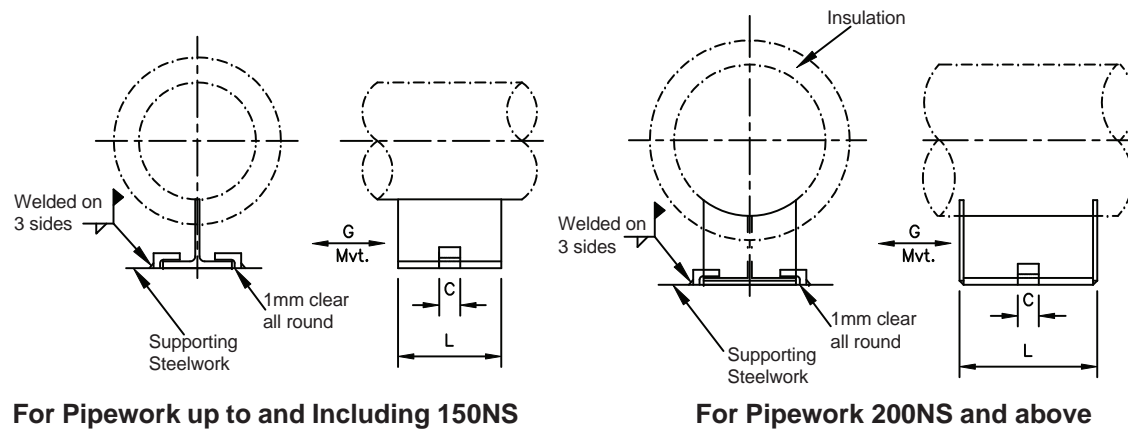


FIG. 381 SLIDING SUPPORT/FIG. 382 SLIDING GUIDE

Nom Pipe Size	Pipe O/D	B	C	Max Mvt G	K	L	Cut From	Max Load Kg
20	26.6	114	10	100	60	150	Plate	230
25	33.4	117	10	100	60	150	Plate	
32	42.1	121	10	100	60	150	Plate	
40	48.3	125	10	100	60	150	Plate	
50	60.3	131	10	100	60	150	Plate	
65	76.1	138	10	100	100	150	203x102x23 U/B	450
80	88.9	145	10	100	100	150	203x102x23 U/B	
90	101.6	151	10	100	100	150	203x102x23 U/B	
100	114.3	158	12	90	100	150	203x102x23 U/B	
125	139.7	170	12	90	100	150	203x102x23 U/B	800
150	168.3	185	12	90	100	150	203x102x23 U/B	
200	219.1	210	12	100	134	200	203x133x30 U/B	2900
250	273.0	237	12	100	134	200	203x133x30 U/B	
300	323.9	262	15	100	205	200	203x203x60 U/C	5900
350	355.6	278	15	150	205	250	203x203x60 U/C	6500
400	406.4	304	15	150	205	250	203x203x60 U/C	
450	457.0	329	15	145	254	250	254x254x73 U/C	7900
500	508.0	354	20	180	305	300	305x305x97 U/C	8700
550	558.8	380	20	180	305	300	305x305x97 U/C	
600	610.0	405	20	180	305	300	305x305x97 U/C	9200

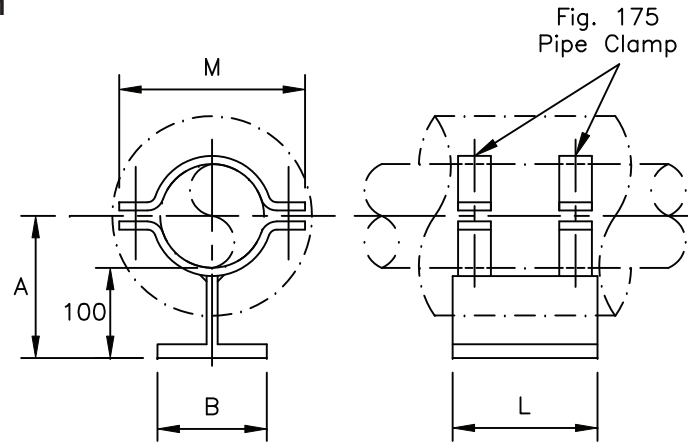
Material - Carbon Steel.

Dimensions may be modified to suit specific applications, and low friction bearing surfaces applied, i.e. P. T. F. E.

Ancillary Equipment



FIG. 384-1



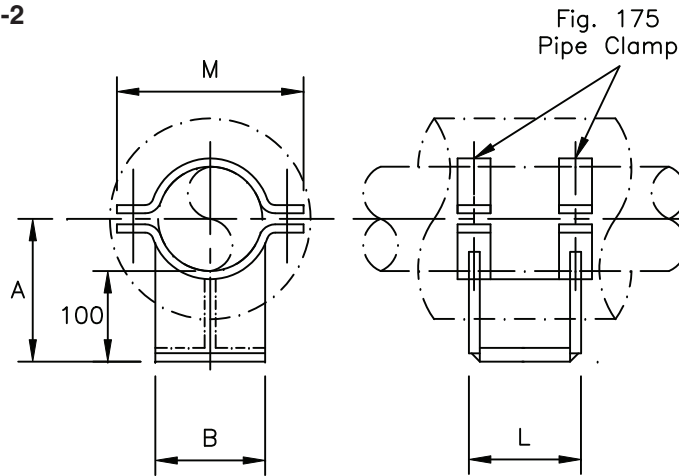
PIPE SADDLE CLAMPED FOR UP TO AND INCLUDING 150NB

Max Load Kg	230					450				800	
Nom Pipe Size	20	25	32	40	50	65	80	90	100	125	150
A	114	117	121	124	130	138	144	151	157	170	184
B	60	60	60	60	60	100	100	100	100	100	100
L	150	150	150	150	150	150	150	150	150	150	150
M	102	114	126	140	152	178	192	204	238	276	314

Material - Carbon Steel.

**When ordering specify:
Figure No.
Nominal Pipe Size**

FIG. 384-2



PIPE SADDLE CLAMPED FOR PIPEWORK 200NB & OVER

Max Load Kg	2900	5900	6500		7900	8700	9200		
Nom Pipe Size	200	250	300	350	400	450	500	550	600
A	210	237	262	278	303	329	354	379	405
B	134	134	205	205	205	254	305	305	305
L	200	200	200	250	250	250	300	300	300
M	378	452	504	542	592	668	720	804	864

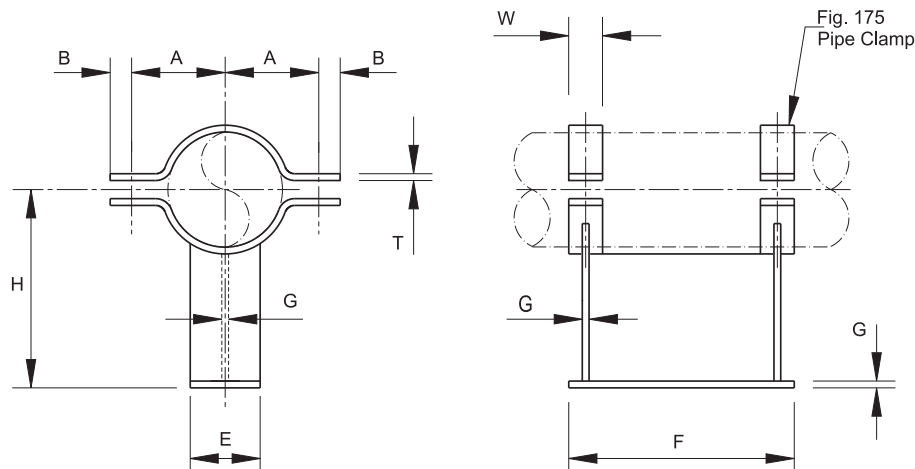
Material - Carbon Steel.

**When ordering specify:
Figure No.
Nominal Pipe Size**

Ancillary Equipment



FIG. 385



CLAMPED PIPE SADDLE FABRICATION FOR PIPE INSULATION UP TO 100MM THICK

Pipe		A	B	WxT	E	F	G	H	Max Load Kg	For Range A & B only
NB	O/D									
65	76.1	70	19	30x6	62	200	6	161	2345	
80	88.9	76	20	30x6	62	200	6	169		
90	101.6	83	19	30x6	62	200	6	175		
100	114.3	95	24	40x6	62	200	6	182	2650	
125	139.7	114	24	40x6	120	300	10	184		
150	168.3	127	30	40x10	120	300	10	207	5200	
175	193.7	146	30	40x10	120	300	10	222		
200	219.1	159	30	40x10	120	300	10	236		
225	244.5	178	30	40x10	120	300	10	249		
250	273.0	190	36	50x12	174	300	12	257	7240	
300	323.9	216	36	50x12	174	300	12	287		
350	355.6	235	36	65x12	215	300	16	299		
400	406.4	260	36	65x12	230	300	16	326	11420	
450	457.0	298	36	65x15	245	300	16	352		
500	508.0	324	36	65x15	280	300	16	375	16300	
550	558.8	357	45	80x15	330	300	20	400		
600	610.0	387	45	80x15	330	300	20	425	17840	

Material:-

Range A Carbon Steel (-20 to 340°C)

Range B Carbon Steel (341 to 400°C)

Range C Alloy Steel

When ordering specify:

Figure No.

Range

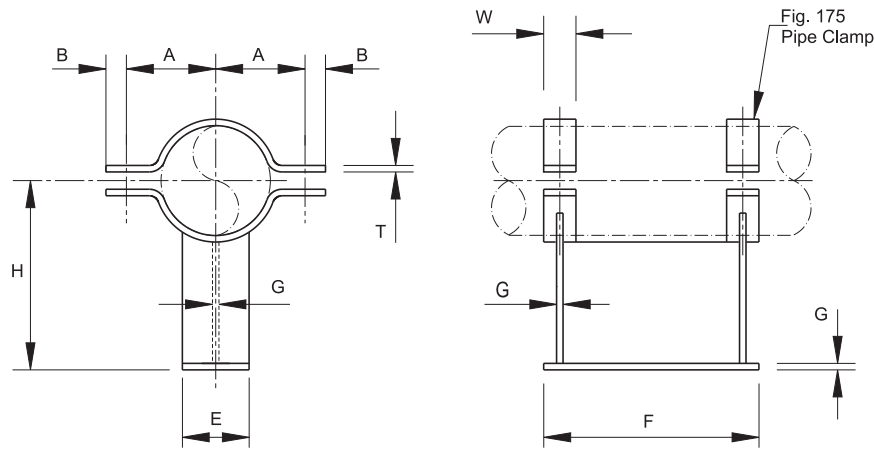
Nominal Pipe Size

Insulation Thickness

Ancillary Equipment



FIG. 386



CLAMPED PIPE SADDLE FABRICATION FOR PIPE INSULATION 100-200MM THICK

Pipe		A	B	WxT	E	F	G	H	Max Load Kg
NB	O/D								
65	76.1	70	19	30x6	66	200	8	261	3670
80	88.9	76	20	30x6	66	200	8	269	
90	101.6	83	19	30x6	66	200	8	275	
100	114.3	95	24	40x6	66	200	8	282	3870
125	139.7	114	24	40x6	124	300	12	284	6110
150	168.3	127	30	40x10	124	300	12	307	8360
175	193.7	146	30	40x10	124	300	12	322	
200	219.1	159	30	40x10	124	300	12	336	
225	244.5	178	30	40x10	124	300	12	349	13350
250	273.0	190	36	50x12	182	300	16	357	
300	323.9	216	36	50x12	182	300	16	387	
350	355.6	235	36	65x12	220	300	20	399	15290
400	406.4	260	36	65x12	245	300	20	426	16310
450	457.0	298	36	65x15	255	300	20	452	17840
500	508.0	324	36	65x15	290	300	20	475	20385
550	558.5	357	45	80x15	350	300	25	500	21410
600	610.0	387	45	80x15	350	300	25	525	22935

{ For Range A & B only

Material:-

Range A Carbon Steel (-20 to 340°C)

Range B Carbon Steel (341 to 400°C)

Range C Alloy Steel

When ordering specify:

Figure No.

Range

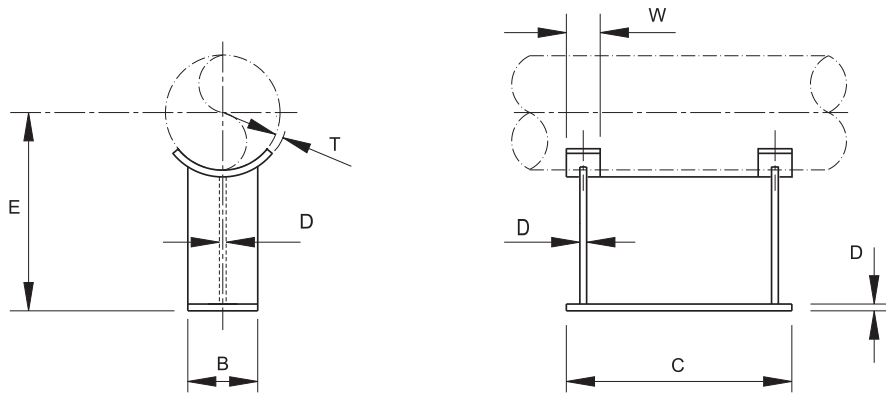
Nominal Pipe Size

Insulation Thickness

Ancillary Equipment



FIG. 387



PIPE SADDLE FABRICATION FOR PIPE INSULATION UP TO 100MM THICK

Pipe		WxT	B	C	D	E	Max Load Kg	} For Range A & B only
NB	O/D							
65	76.1	30x6	62	200	6	161	2345	
80	88.9	30x6	62	200	6	169		
90	101.6	30x6	62	200	6	175		
100	114.3	40x6	62	200	6	182	2650	
125	139.7	40x6	120	300	10	184	4075	
150	168.3	40x10	120	300	10	207	5200	
175	193.7	40x10	120	300	10	222		
200	219.1	40x10	120	300	10	236		
225	244.5	40x10	120	300	10	249	7240	
250	273.0	50x12	174	300	12	257		
300	323.9	50x12	174	300	12	287	11420	
350	355.6	65x12	215	300	16	299		
400	406.4	65x12	230	300	16	326	15300	
450	457.0	65x15	245	300	16	352		
500	508.0	65x15	280	300	16	375	16300	
550	558.8	80x15	330	300	20	400	17025	
600	610.0	80x15	330	300	20	425	17840	

Material:-

Range A Carbon Steel (-20 to 340°C)

Range B Carbon Steel (341 to 400°C)

Range C Alloy Steel

When ordering specify:

Figure No.

Range

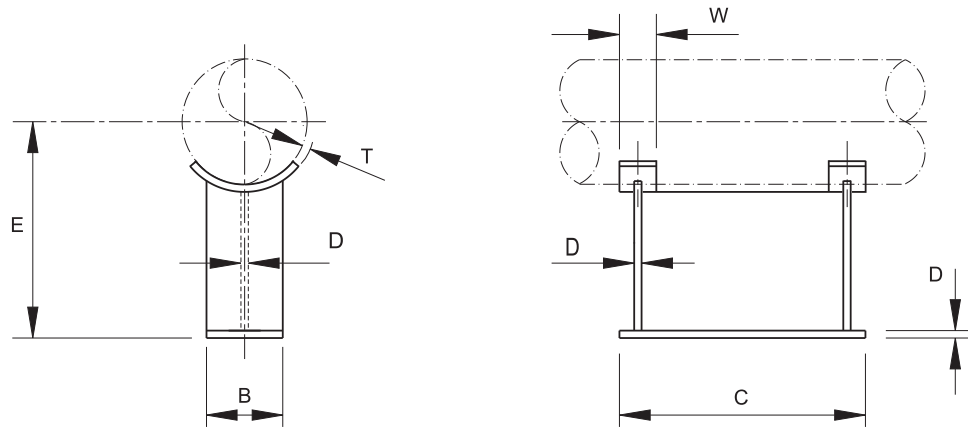
Nominal Pipe Size

Insulation Thickness

Ancillary Equipment



FIG. 388



PIPE SADDLE FABRICATION FOR PIPE INSULATION 100-200MM THICK

Pipe		WxT	B	C	D	E	Max Load Kg
NB	O/D						
65	76.1	30x6	66	200	8	261	3670
80	88.9	30x6	66	200	8	269	
90	101.6	30x6	66	200	8	275	
100	114.3	40x6	66	200	8	282	
125	139.7	40x6	124	300	12	284	6110
150	168.3	40x10	124	300	12	307	8360
175	193.7	40x10	124	300	12	322	
200	219.1	40x10	124	300	12	336	
225	244.5	40x10	124	300	12	349	
250	273.0	50x12	182	300	16	357	13350
300	323.9	50x12	182	300	16	387	15290
350	355.6	65x12	220	300	20	399	
400	406.4	65x12	245	300	20	426	16310
450	457.0	65x15	255	300	20	452	17840
500	508.0	65x15	290	300	20	475	20385
550	558.8	80x15	350	300	25	500	21410
600	610.0	80x15	350	300	25	525	22935

{ For Range A & B only

Material:-

Range A Carbon Steel (-20 to 340°C)

Range B Carbon Steel (341 to 400°C)

Range C Alloy Steel

When ordering specify:

Figure No.

Range

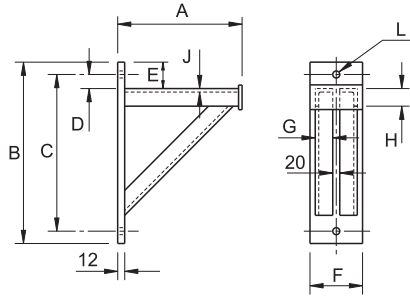
Nominal Pipe Size

Insulation Thickness

Ancillary Equipment



FIG. 84



MEDIUM WELDED STEEL BRACKET

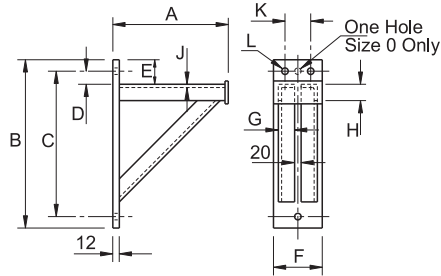
Size	A	B	C	D	E	F	G	H	J	L
0	305	465	395	30	65	110	40	40	5	22
1	460	615	545	30	65	130	50	50	6	22
2	610	770	700	30	65	130	50	50	6	22

Maximum Load - 700 Kg.

Material - Carbon Steel.

**When ordering specify:
Figure No.
Size**

FIG. 139



HEAVY WELDED STEEL BRACKET

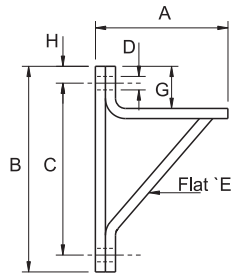
Size	A	B	C	D	E	F	G	H	J	K	L
0	305	470	390	30	70	110	40	40	6	-	22
1	460	615	545	35	70	130	50	50	8	70	22
2	610	760	700	40	70	130	50	65	8	65	26
3	765	925	845	40	80	130	50	65	8	65	26
4	915	1075	990	40	80	160	65	100	10	90	26
5	1065	1270	1170	40	90	160	65	100	10	90	26

Maximum Load - 1360 Kg.

Material - Carbon Steel.

**When ordering specify:
Figure No.
Size**

FIG. 150



STEEL BRACKET

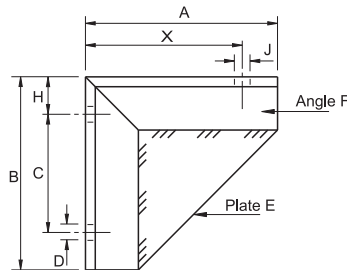
Size	A	B	C	D	G	H	Flat E
1	305	460	380	14	76	30	100x10
2	460	610	535	14	76	30	100x10
3	610	760	685	18	76	30	100x12
4	760	915	840	18	76	30	100x12
5	915	1070	990	22	76	30	100x15

Maximum Load - 230 Kg.

Material - Carbon Steel.

**When ordering specify:
Figure No.
Size**

FIG. 159



STEEL BRACKET

Size	A	B	C	D	H	Angle F	Plate E	Max Load Kg
1	305	305	230	14	50	50x50x6	6	310
2	460	460	380	14	50	50x50x6	6	320
3	610	610	520	18	50	50x50x8	6	550
4	760	760	645	18	65	60x60x10	6	600
5	915	915	780	22	75	80x80x10	10	850

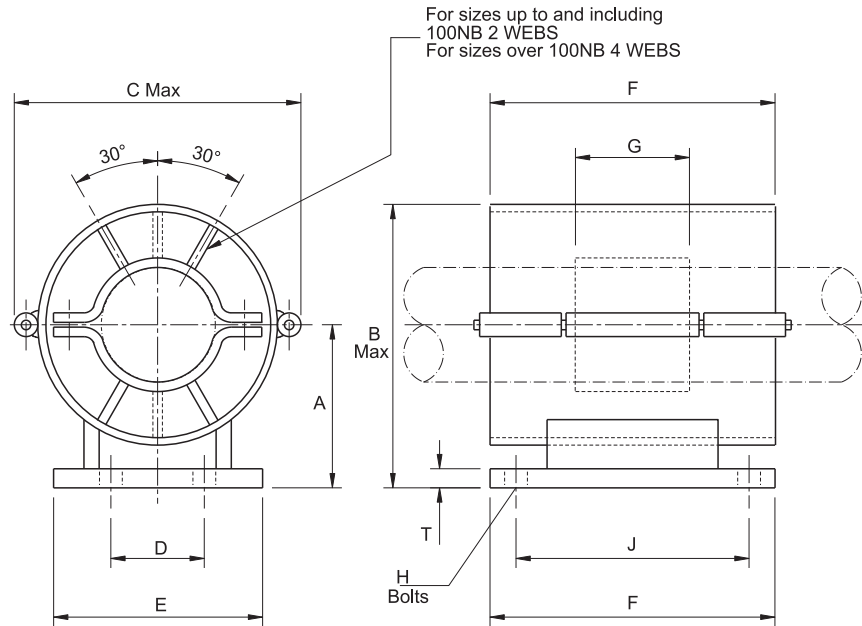
Material - Carbon Steel.

**When ordering specify:
Figure No.
Size
Distance from wall to centre of pipe (Dim. X)
Hole Size J**

Ancillary Equipment



FIG. 1007



Material - Carbon Steel.

Sleeve can be made longer for extreme travel conditions.
 Sleeve can be split at plus or minus 45 degrees if minimum Dimension C is required for clearance.

S.W. Loads to suit specific applications.

When ordering specify:
Figure No.
Nominal Pipe Size
Thickness of Insulation
Guide Size No.

PIPE GUIDE

Size	A	B	C	D	E	F	G	H	J	T
1	95	152	157	55	100	200	100	M12	150	6
2	110	180	183	70	130	200	100	M12	150	6
3	125	209	211	85	140	200	100	M12	150	8
4	150	260	262	110	160	200	100	M12	150	8
5	175	312	316	135	185	200	100	M16	150	10
6	200	378	398	210	280	200	100	M16	150	10
7	225	428	460	240	300	300	150	M20	230	15
8	250	479	511	280	340	300	150	M20	230	15
9	280	534	562	340	400	300	150	M24	230	20
10	305	584	612	380	460	300	150	M24	230	20
11	330	635	663	400	500	300	150	M24	230	20

Size	Thickness of Insulation					
	25	38	50	63	75	100
1	0-25					
2	32-50	25				
3	65	32-50	25			
4	80-100	65-80	32-65	25-50	25	
5	125	100-125	80-100	65-80	32-65	25
6	200	150	125-150	100-125	80-100	32-65
7	250	200	200	150	125-150	80-100
8	-	250	250	200	200	125-150
9	350	300-350	300	250	250	200
10	400	400	350	300	300	250
11			400	400	350	300

Nominal Pipe Sizes