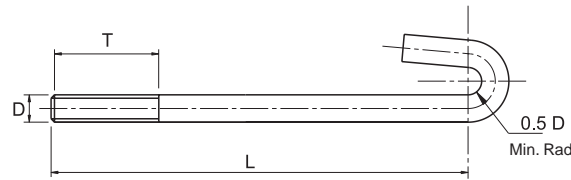


# Ancillary Equipment



FIG. 31



J BEAM HOOK

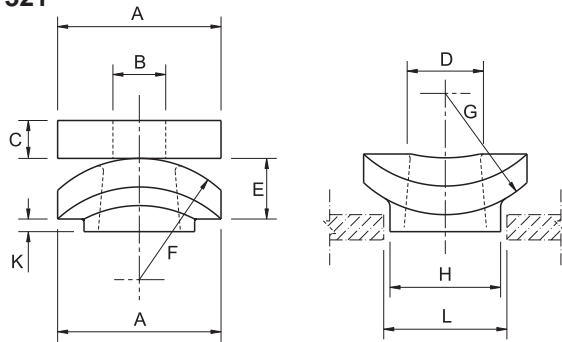
Size D	T	Length L							Max Load Kg
		100	125	150	175	200	250	300	
M10	65	100	125	150	175	200	250	300	105
M12	65	100	125	150	175	200	250	300	200
M16	65	-	125	150	175	200	250	300	320
M20	75	-	125	150	175	200	250	300	470
M24	100	-	-	150	175	200	250	300	880

Material - Carbon Steel.

When ordering specify:  
**Figure No.**  
**Size**  
**Length L**  
**Beam Flange Thickness**

FIG. 320

FIG. 321



DUAL FACED ROCKING WASHER, FLAT WASHER

Size Rod Dia	A	B	C	D	E	F	G	H	K	L	Max Load Kg
M12	50	13	10	20	16	32	32	33	5	38	1040
M16	50	17	10	20	16	32	32	33	5	38	1040
M20	65	21	15	28	24	48	48	44	5	49	2360
M24	65	26	15	28	24	48	48	44	5	49	2360
M30	98	32	20	40	36	72	72	59	5	66	5460
M36	98	38	20	40	36	72	72	59	5	66	5460
M42	114	45	25	46	42	84	84	67	6	74	7480
M48	130	52	30	52	48	96	96	75	7	82	9820
M56	151	60	35	60	56	112	112	86	8	93	13560
M64	173	68	40	69	64	128	128	96	10	104	17900
M72	194	76	45	77	72	144	144	107	11	115	22740

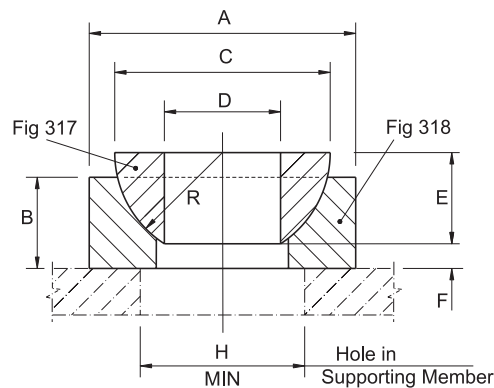
Material - Fig. 320 Nodular (S.G.) Iron  
 Fig. 321 Carbon Steel

It is recommended that Figures 320 and 321 be used in conjunction with one another. Max Angulation  $\pm 5^\circ$

When ordering specify:  
**Figure No.**  
**Size**

FIG. 317

FIG. 318



HEMISPHERICAL WASHER, HEMISPHERICAL CUP

Rod Dia	Fig 318		Fig 317			F	D	H	Max Load Kg
	A	B	C	E	R				
M6	25	9	19	8	10	3	8	17	135
M8	28	10	22	10	11	3	10	20	240
M10	32	12	25	12	12	5	12	24	380
M12	35	12	28	12	14	5	14	27	560
M16	41	16	34	16	17	6	18	33	1040
M20	54	19	44	19	22	6	22	38	1630
M24	67	25	57	25	28	8	26	45	2360
M30	86	32	76	32	38	10	33	55	3750
M36	100	35	80	35	40	10	40	65	5460
M42	102	38	89	38	44	12	46	65	7480
M48	120	40	100	40	50	12	52	75	9820
M56	130	45	110	45	55	15	60	85	13560
M64	150	50	120	50	60	15	68	95	17900
M72	165	55	135	55	68	15	76	102	22740
M80	180	60	150	60	75	20	84	115	28600
M90	200	70	170	70	85	20	95	125	36000

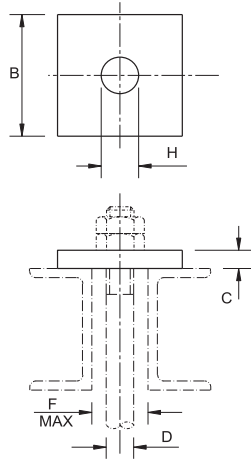
Material - Malleable Iron up to and including M30 BS6681 W40-05.  
 Alternative Carbon Steel M36 upwards.

When ordering specify:  
**Figure No.**  
**Rod Diameter**

# Ancillary Equipment



FIG. 102



## STEEL SQUARE PLATE For No Angulation of Sling Rod \*

Size	B Sq.	C	D	Max F	H	Max. Load Kg
1	80	6	M10	15	12	380
2	80	6	M12	18	14	560
3	80	10	M16	22	18	1040
4	100	10	M20	26	22	1630
6	100	12	M24	32	26	2360
7	100	15	M30	38	32	3750
9	130	15	M36	48	40	5460
10	130	20	M42	54	46	7480
11	130	20	M48	64	52	9820
12	150	20	M56	70	60	13560
13	200	30	M64	78	68	17900
14	200	30	M72	92	76	22740
15	250	30	M80	110	84	28600
16	300	40	M90	120	94	36000
17	300	40	M100	140	104	44700

Material - Carbon Steel.

When ordering specify:

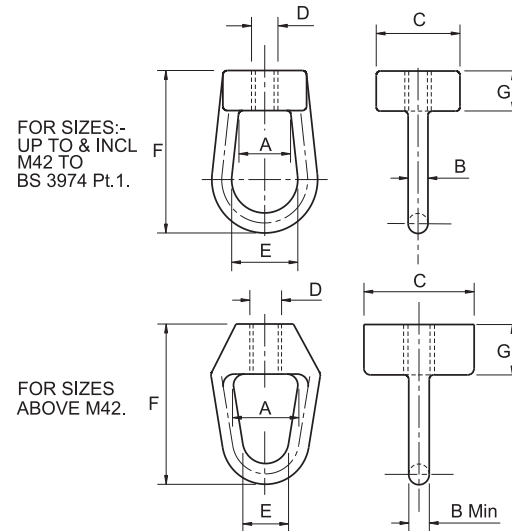
Figure No.

Size

Rod Dia D

\* For Sling Rods where angulation is applicable use Fig 102A - see page 99 for details

FIG. 279L (Left Hand Thread)  
FIG. 279R (Right Hand Thread)



FOR SIZES:-  
UP TO & INCL  
M42 TO  
BS 3974 Pt.1.

FOR SIZES  
ABOVE M42.

## WELDLESS EYE NUT (BOW)

Size D	A	B Dia	C Dia	E	F	G	Max Load Kg
M8	14	10	32	25	64	16	240
M10	14	10	32	25	64	16	380
M12	16	13	38	30	73	18	560
M16	16	13	38	30	73	18	1040
M20	25	16	45	44	102	25	1630
M24	26	19	50	50	124	28	2360
M30	44	29	70	70	149	40	3750
M36	44	29	70	70	149	40	5460
M42	46	30	80	100	180	45	7480
M48	90	31	100	70	240	75	9820
M56	100	36	100	80	270	80	13560
M64	130	42	130	100	330	80	17900
M72	130	47	130	100	330	80	22740

Material - Forged Steel.

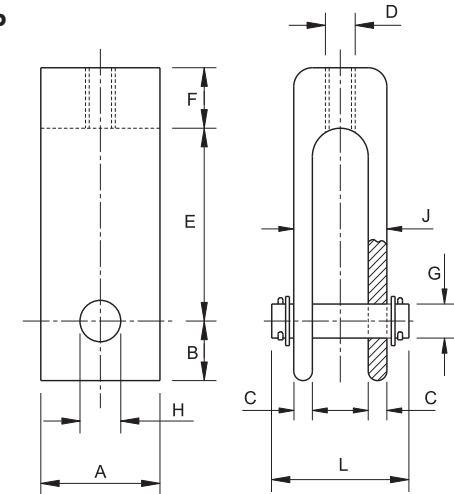
Sizes M48 upward, type change.

When ordering specify:

Figure No. (Right or Left Hand Thread)

Size

FIG. 276P



## STEEL CLEVIS

Size	D Thrd	A	B	C	E	F	G	H	J	L	Max. Load Kg
2	M10	30	19	10	82	32	10	12	38	60	380
2	M12	30	19	10	82	32	12	14	38	60	560
2.5	M16	45	33	10	68	32	16	18	50	75	1040
2.5	M20	45	33	10	68	32	20	22	50	75	1630
3	M24	65	38	12	63	32	24	26	58	90	2360
3	M30	65	38	12	63	32	30	32	58	90	3750
3.5	M36	70	45	12	152	41	36	39	80	115	5460
4	M42	90	51	12	152	44	42	45	85	130	7480
5	M48	100	64	16	178	57	48	51	102	165	9820
6	M56	130	76	19	203	70	56	60	127	195	13560
6	M64	130	76	19	203	70	64	68	127	195	17900
7	M72	140	90	22	235	80	72	76	140	210	22740
8	M80	150	110	40	260	105	80	84	180	220	28600
9	M90	175	125	45	295	120	90	95	205	290	36000

Material - Carbon Steel.

Larger sizes available on request

Supplied with suspension pin. (Bolts may be fitted in lieu of pins unless specified)

When ordering specify:

Figure No.

Size

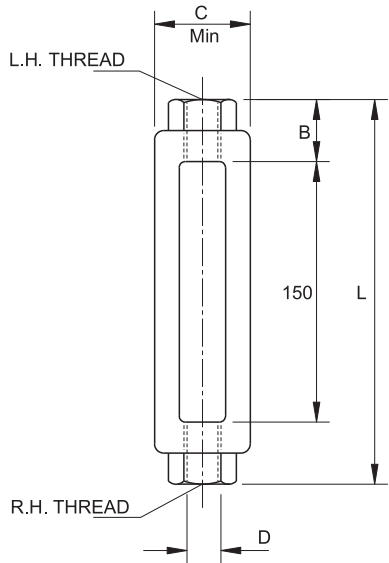
Rod Size Tapping D

Pin Hole Clearance H

# Ancillary Equipment



**FIG 132**



**TURNBUCKLE (FORGED)**

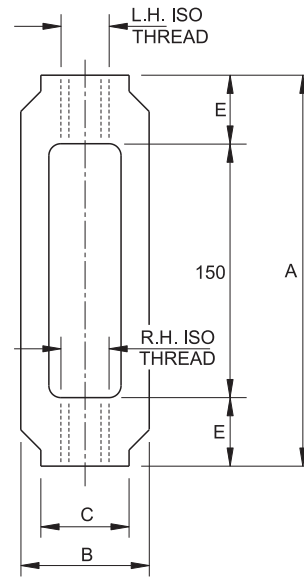
Size D	B	C	L	Max Load Kg
M10	17	28	184	380
M12	20	31	190	560
M16	26	41	202	1040
M20	32	49	214	1630
M24	39	59	228	2360
M30	53	67	256	3750
M36	58	78	266	5460
M42	68	92	286	7480

Material - Forged Steel.

Turnbuckles can be supplied with longer opening on request

**When ordering specify:**  
**Figure No.**  
**Size**  
**Thread if not Standard**

**FIG 132P**



**STEEL TURNBUCKLE**

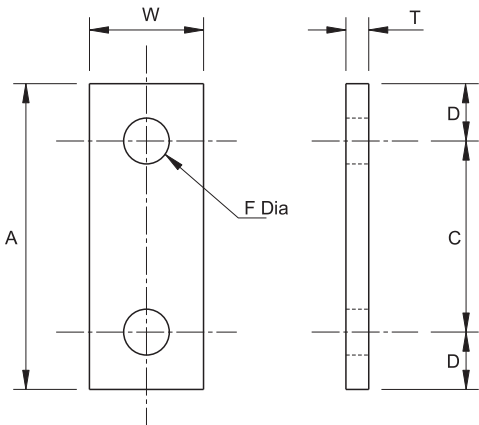
Size D	A	B	C	E	Max Load Kg
M24	200	65	35	25	2360
M30	210	83	50	30	3750
M36	210	83	50	30	5460
M42	230	91	65	40	7480
M48	250	92	75	50	9820
M56	250	113	85	50	13560
M64	270	124	95	60	17900
M72	300	150	105	75	22740

Material - Carbon Steel

Turnbuckles can be supplied with longer opening on request

**When ordering specify:**  
**Fig No.**  
**Size**  
**Thread if not Standard**

**FIG. 300**



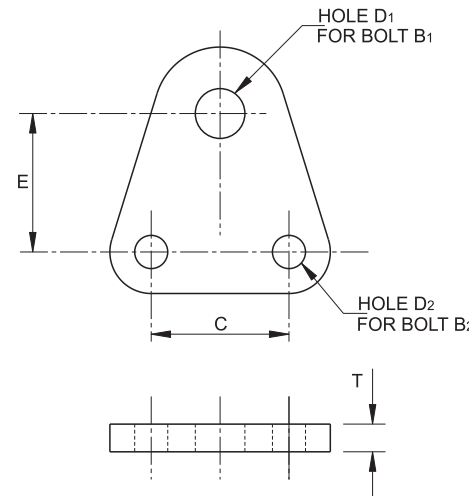
**CONNECTING PLATE**

Size	Bolt Size	A	C	D	F	W	T	Max Load Kg
1	10	80	50	15	12	30	6	380
2	12	111	75	18	14	40	6	560
3	16	148	100	24	18	45	10	1040
4	20	185	125	30	22	60	12	1630
5	24	222	150	36	26	65	15	2360
6	30	240	150	45	32	80	20	3750
7	36	258	150	54	39	100	25	5460
8	42	286	160	63	45	120	30	7480
9	48	304	160	72	51	130	30	9820
10	56	368	200	84	60	140	30	13550
11	64	412	220	96	68	140	35	17900
12	72	486	270	108	76	150	40	22790

Material - Carbon Steel

**When ordering specify:**  
**Figure No.**  
**Size**

**FIG. 302**



**CONNECTING PLATE DOUBLE**

Size	B <sub>1</sub>	B <sub>2</sub>	C	E	D <sub>1</sub>	D <sub>2</sub>	T	Max Load Kg
1	16	10	50	50	18	12	10	760
2	20	12	65	75	22	14	10	1120
3	24	16	70	100	26	18	12	2080
4	30	20	85	125	32	22	15	3260
5	36	24	120	150	39	26	20	4720
6	42	30	150	150	45	32	20	7500
7	56	36	120	150	59	39	25	10920
8	64	42	170	160	67	45	25	14960
9	64	48	180	160	67	51	30	17900
10	72	56	205	200	76	59	35	20300
11	72	64	230	220	76	67	40	22700

Material - Carbon Steel

**When ordering specify:**  
**Figure No.**  
**Size**