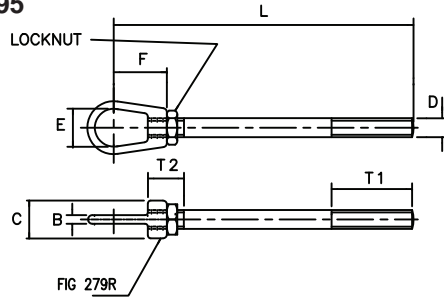


# Ancillary Equipment



**FIG. 395**



**COMPOSITE EYE ROD**

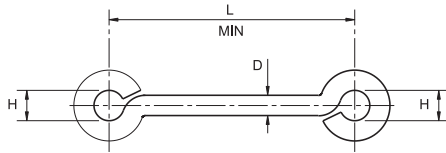
Size D	M10	M12	M16	M20	M24	M30	M36	M42	M48	M56	M64	M72
B	10	13	13	16	19	29	29	30	31	36	42	47
C	32	38	38	45	50	70	70	80	100	100	130	130
E	25	30	30	44	50	70	70	100	70	80	100	100
F	41.5	45	45	64	80	85	85	100	174	194	238	233
T1	150	150	150	150	150	250	250	250	250	250	250	250
T2	50	50	50	50	50	80	80	80	130	130	130	130
Max Load Kg												
	380	560	1040	1630	2360	3750	5460	7480	9820	13560	17900	22740

Figure 279 will be supplied with locknut.

Material - Carbon Steel.

**When ordering specify:**  
**Figure No.**  
**Size**  
**Length L and Thread Length T1 if not standard**  
**Thread: Standard Right Hand**  
**Left Hand supplied on request.**

**FIG. 294 (Unwelded)**  
**FIG. 301 (Welded)**



**EYE ROD**

Size D	M10	M12	M16	M20	M24	
H	20	22	28	32	38	
L	100	150	150	200	200	Min

Fig 294 Max Load Kg

	105	200	320	470	880
--	-----	-----	-----	-----	-----

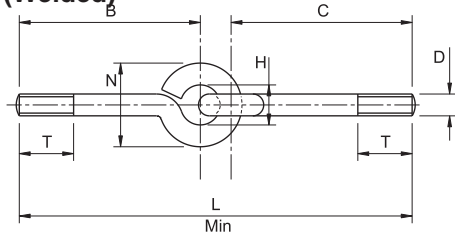
Fig 301 Max Load Kg

	380	560	1040	1630	2360
--	-----	-----	------	------	------

Material - Carbon Steel.  
 Figure 294 Rods the eyes are not welded.  
 Figure 301 Rods have welding eyes.

**When ordering specify:**  
**Figure No. (Welded or Unwelded)**  
**Size**  
**Length L**

**FIG. 306 (Unwelded)**  
**FIG. 341 (Welded)**



**LINKED EYE RODS**

Size D	M8	M10	M12	M16	M20	M24	
H	10	13	22	24	30	35	
N	26	33	46	56	70	83	
T	150	150	150	150	150	150	
L	410	410	485	485	540	540	Min

Fig. 306 Max Load Kg

	70	105	200	320	470	880
--	----	-----	-----	-----	-----	-----

Fig. 341 Max Load Kg

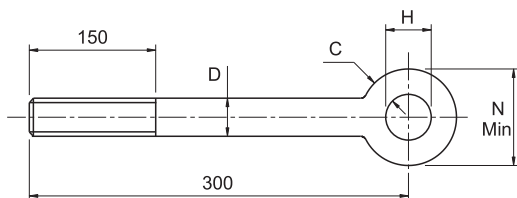
	220	380	560	1040	1630	2360
--	-----	-----	-----	------	------	------

Material - Carbon Steel.

When eye rods are ordered with machine threads longer than the standard thread shown or with Left Hand threads an additional charge will be made.

**When ordering specify:**  
**Figure No.**  
**Size**  
**Dimension Length B                      Dimension Length C**  
**Dimension Length L and Thread Length T if not standard**

**FIG. 393**



**SOLID FORGED EYE ROD**

Size D	M10	M12	M16	M20	M24	M30	M36	M42
C	7	9	12	14	17	21	26	30
H	16	18	22	26	30	36	42	48
N	30	36	46	54	64	78	94	108

Max Load Kg

	380	560	1040	1630	2360	3750	5460	7480
--	-----	-----	------	------	------	------	------	------

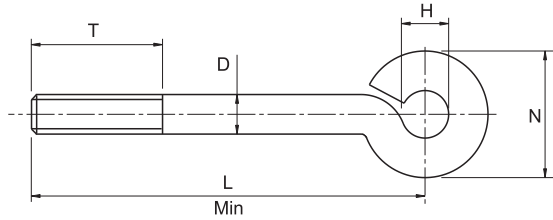
Material - Forged Steel.

**When ordering specify:**  
**Fig No.**  
**Size**  
**Length and Thread Length if not standard**  
**Thread: Standard Right Hand**  
**Left Hand supplied on request.**  
**L = Longer than 300mm will be supplied including Rod Connector Fig 123**

# Ancillary Equipment



**FIG. 33 (Unwelded)  
FIG. 93 (Welded)**



**MACHINE THREAD EYE ROD**

Size D	M8	M10	M12	M16	M20	M24
H	12	20	22	28	32	38
N	28	40	46	60	72	86
T	150	150	150	150	150	150
L	175	200	200	250	250	250

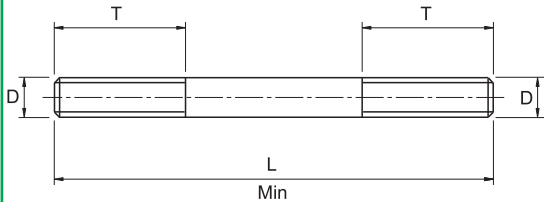
FIG. 33 Max Load Kg						
	70	105	200	320	470	880
FIG. 93 Max Load Kg						
	220	380	560	1040	1630	2360

Material - Carbon Steel.

Figure 33 Rods the eye is not welded.  
Figure 93 Rods have welded eye.

**When ordering specify:**  
**Figure No. (Welded or Unwelded)**  
**Size**  
**Length L and Thread Length T if not standard**  
**Thread: Standard Right Hand**  
**Left Hand supplied on request.**

**FIG. 133**



**MACHINE THREAD ROD**

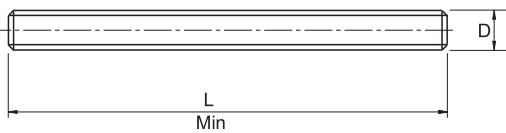
Size D	M10	M12	M16	M20	M24	M30	M36	M42	M48	M56	M64	M72	M80	M90
T	175	185	190	200	205	225	235	250	265	280	300	320	360	400
L Min	400	430	440	470	510	550	570	650	680	710	750	790	870	950
Max Load Kg														
	380	560	1040	1630	2360	3750	5460	7480	9820	13560	17900	22740	28600	36000

Material - Carbon Steel:

When rods are ordered with machine threads longer than the standard length shown, or with Left Hand threads an additional charge will be made. Larger sizes available on request.

**When ordering specify:**  
**Figure No.**  
**Size**  
**Length L and Thread T if not standard**

**FIG. 94**



**ALL THREAD HANGER ROD**

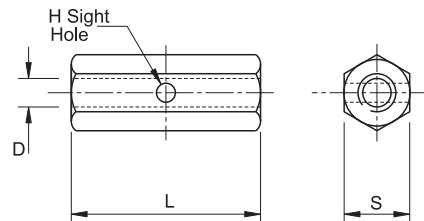
Size D	M6	M8	M10	M12	M16	M20	M24	M30	M36	M42	M48	M56	M64	M72	M80	M90
Max Load Kg																
	135	240	380	560	1040	1630	2360	3750	5460	7480	9820	13560	17900	22740	28600	36000
Available Lengths Galvanised Rods																
L Max	1000	1000	1000	1000	2000	2000	2000	2000	2000	2000	2000	2000	2000	2000	2000	2000

Material - Carbon Steel.

Supplied in 1-2 and 3 metre lengths only. Self coloured.  
For available lengths of galvanised rods see table.  
Large Diameters available on request.

**When ordering specify:**  
**Figure No.**  
**Size**

**FIG. 123**



**STEEL ROD COUPLING (R H THREAD)**

Size D	M10	M12	M16	M20	M24	M30	M36	M42	M48	M56	M64	M72	M80	M90
L	45	45	55	55	70	75	110	120	130	150	175	200	225	225
H	6	6	6	6	8	8	8	10	10	10	10	10	10	10
S	17	19	24	30	36	46	55	65	75	85	95	105	115	130

Max Load Kg														
	380	560	1040	1630	2360	3750	5460	7480	9820	13560	17900	22740	28600	36000

Material - Carbon Steel.

Tapped Right Hand Thread right through.

**When ordering specify:**  
**Figure No.**  
**Size**  
**Thread if not standard**