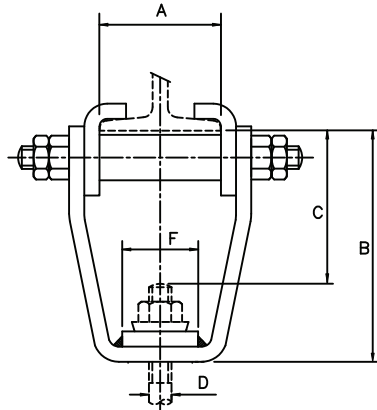


# Ancillary Equipment



FIG. 269



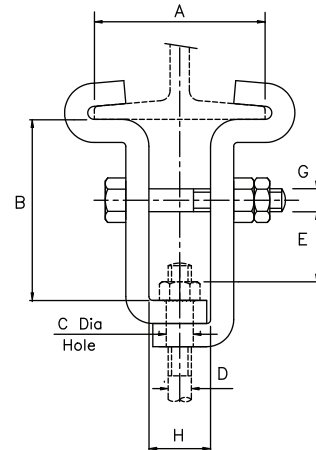
## BEAM CLAMP

Size	A	B	C	D Max	F	Bolt	Mat size	Max Load Kg
1	76-203	179	85	12	50	M10	40X8	360
2	76-203	180	85	16	55	M12	50X8	530
3	76-203	192	80	20	70	M16	50X10	1010
4	102-254	214	80	24	85	M20	60X15	1580
5	102-254	228	80	30	85	M24	80X15	2280
6	102-254	260	95	36	85	M30	90X15	3650
7	102-254	300	110	42	80	M36	100X20	5340
8	127-254	333	125	48	100	M42	130X25	7400

Material - Carbon Steel.

**When ordering specify:**  
**Figure No.**  
**Size**  
**Beam Flange Width A**  
**Beam Flange Thickness**  
**Rod Dia D**

FIG. 268



## BEAM CLAMP

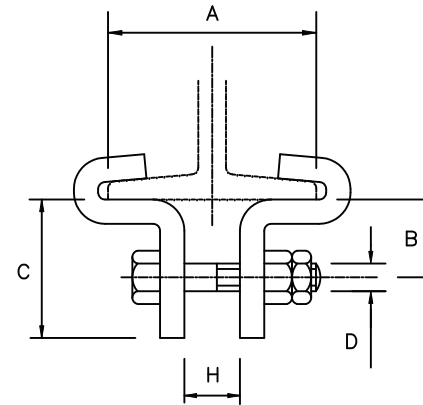
Size	A	B	C Max	D Max	E	G	H	Mat size	Max load Kg
1	76-203	115	14	M12	70	M10	50	30X6	320
2	133-254	155	26	M24	70	M12	80	50X12	680

Material - Carbon Steel.

This clamp cannot be supplied for Flange Widths of less than 75.

**When ordering specify:**  
**Figure No.**  
**Size**  
**Beam Flange Width A**  
**Beam Flange Thickness**  
**Rod Dia D**

FIG. 15

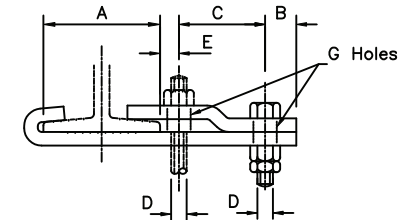


## BEAM CLAMP

Size	A	B	C	D	H	Mat size	Max load Kg
1	76-203	30	45	M12	16	30X6	320
2	76-203	45	60	M12	20	40X10	400
3	76-203	45	70	M16	20	50X10	450
4	76-254	50	80	M20	24	50X12	680

Material - Carbon Steel.

**When ordering specify:**  
**Figure No.**  
**Size**  
**Beam Flange Width A**  
**Beam Flange Thickness**

FIG. 3  
FIG. 18

## TOP BEAM CLAMP/SIDE BEAM CLAMP

Size	A	B	C	D Max	E	G	Mat size	Max load Kg
1	76-305	20	60	M12	10	14	30X6	230
2	76-305	25	65	M16	12	18	40X10	320
3	76-305	30	75	M20	12	22	50X10	360
4	76-305	30	90	M24	14	26	65X12	550

Material - Carbon Steel.

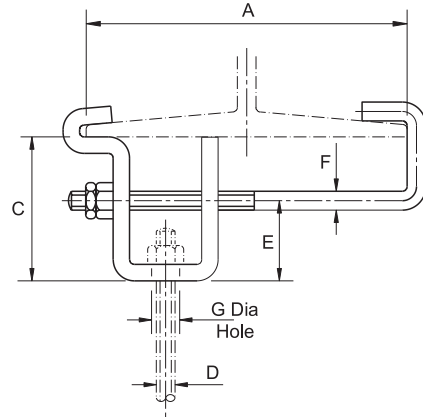
Top Beam Clamp Fig 3  
 Side Beam Clamp Fig 18

**When ordering specify:**  
**Figure No.**  
**Size**  
**Beam Flange Width A**  
**Beam Flange Thickness**  
**Rod Dia D**

# Ancillary Equipment



FIG. 14



## ADJUSTABLE BEAM CLAMP

Size	C	D Max	E	G	Matt Size	'A'	F	Max Load kg
1	70	M10	40	12	30x6	89-203	M10	135
2	80	M12	45	14	40x6	102-203	M12	320
3	90	M16	50	18	50x6	114-203	M16	450

Material - Carbon Steel.

Adjustable from 90 to 205 flange of beam.  
Adjustable from 205 to 300 flange of beam to special order

When ordering specify:

Figure No.

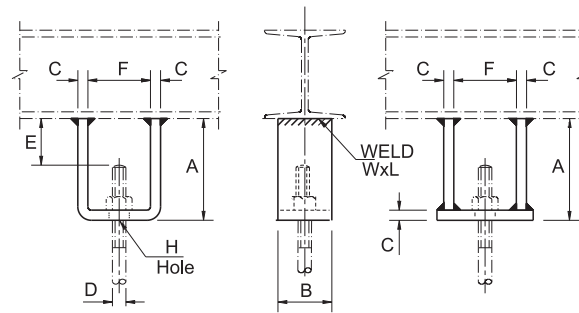
Size

Beam Flange Width

Beam Flange Thickness

Rod Dia D

FIG. 113A



## BEAM WELDING ATTACHMENT

Size	A	BxC	D	E	F	H	Min Weld WxL	Max Load Kg
1	75	50x6	M10	30	40	12	3x45	380
2	75	50x6	M12	30	40	14	3x45	560
3	85	80x10	M16	30	60	18	3x55	1040
4	85	80x10	M20	30	70	22	4x55	1630
6	115	100x12	M24	40	75	26	4x90	2360
7	120	100x15	M30	40	110	32	5x90	3750
9	165	150x15	M36	60	120	39	5x140	5460
10	200	150x20	M42	70	140	45	6x135	7480
11	210	150x25	M48	70	175	51	6x135	9820
12	240	180x25	M56	85	185	60	8x130	13560
13	250	180x30	M64	85	220	68	8x130	17900
14	260	200x30	M72	85	230	76	8x150	22740

Material - Carbon Steel.

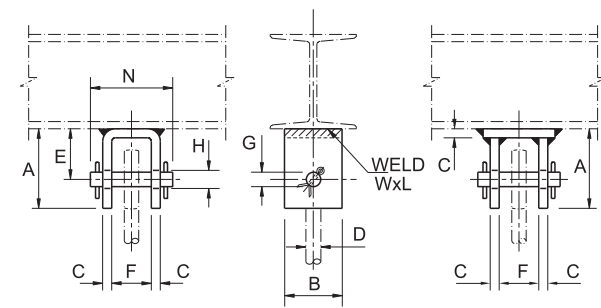
Fabricated Size 10 upward

When ordering specify:

Figure No.

Size

FIG. 113B



## BEAM WELDING ATTACHMENT

Size	A	BxC	D	E	F	Pin GxN	Min Weld WxL	S/Pin Size	Hole H	Max Load Kg
1	50	50x6	M10	30	30	10x65	3x30	2.5x30	12	380
2	65	50x6	M12	40	30	12x65	3x30	3.2x30	14	560
3	70	50x6	M16	45	30	16x65	3x30	3.2x30	18	1040
4	85	80x10	M20	55	35	20x85	4x35	4.0x40	22	1630
6	110	80x10	M24	70	40	24x90	4x50	5.0x40	26	2360
7	125	100x12	M30	80	50	30x105	5x55	5.0x40	32	3750
9	160	130x15	M36	100	70	36x135	5x70	6.3x60	39	5460
10	180	130x15	M42	110	90	42x155	6x90	6.3x70	45	7480
11	210	150x20	M48	130	90	48x170	6x90	8.0x70	51	9820
12	235	180x20	M56	145	100	56x180	8x100	8.0x80	60	13560
13	255	200x20	M64	160	110	64x195	8x110	8.0x90	68	17900
14	280	220x25	M72	180	120	72x215	8x120	8.0x100	76	22740
15	300	250x25	M80	200	130	80x230	10x100	10.0x100	84	28600
16	335	300x30	M90	220	140	90x250	10x120	10.0x120	94	36000
17	375	300x40	M100	260	150	100x285	10x130	10.0x120	104	44700

Material - Carbon Steel.

Fabricated Size 11 upward

When ordering specify:

Figure No.

Size

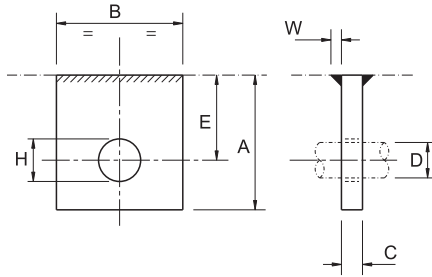
Note:

Bolts may be fitted in lieu of Pins unless specified.

# Ancillary Equipment



FIG. 114



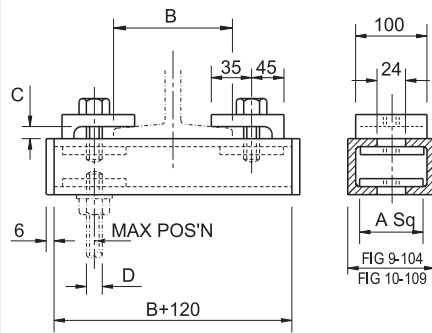
**WELDING LUG**

Size	A	BxC	D Bolt	E	H	Min Weld W	Max Load Kg	Fig 276 Size No
1	55	50x6	M10	30	12	3	380	2
2	65	50x6	M12	40	14	3	560	2
3	75	50x6	M16	50	18	3	1040	2
4	90	80x10	M20	60	22	5	1630	2.5
6	115	80x10	M24	80	26	5	2360	3
7	135	100x12	M30	90	32	7	3750	3
9	175	130x15	M36	110	39	7	5460	3.5
10	200	130x15	M42	130	45	8	7480	4
11	235	150x20	M48	150	51	8	9820	5
12	260	180x20	M56	170	60	10	13560	6
13	295	200x20	M64	200	68	10	17900	6
14	325	220x25	M72	220	76	12	22740	7
15	340	250x25	M80	240	84	12	28600	7
16	385	300x30	M90	270	94	12	36000	-
17	415	300x40	M100	300	104	12	44700	-

Material - Carbon Steel.

When ordering specify:  
Figure No.  
Size

FIG. 9 and 10



**CARRIER CLAMP : FIG 9**

A	B Max	C Max	Channel Profile	End Plate	D Rod	Max Load Kg
90x10	160	13	60x40x4	100x60	M10	380
90x10	160	13	60x40x4	100x60	M12	560
90x15	160	13	60x40x4	100x60	M16	1040
90x15	160	13	60x40x4	100x60	M20	1630

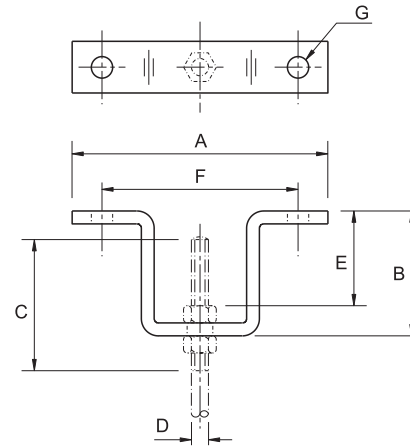
**CARRIER CLAMP : FIG 10**

A	B Max	C Max	Channel Profile	End Plate	D Rod	Max Load Kg
95x10	300	35	65x42x4	105x65	M10	380
95x10	300	35	65x42x4	105x65	M12	560
95x15	300	35	65x42x4	105x65	M16	1040
95x15	300	35	65x42x4	105x65	M20	1630

Material - Carbon Steel.

When ordering specify:  
Figure No.  
Rod Size  
Beam Flange Width B  
and Thickness C

FIG. 113



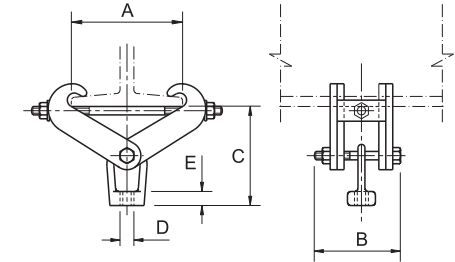
**ADJUSTABLE U PIPE HANGER**

Size	A	B	C	D Max	E	F	G	Matl Size	Max Load Kg
1	155	75	90	M12	55	120	12	30x10	560
2	180	75	100	M16	52	135	14	40x10	1040
3	205	85	110	M20	57	160	18	40x12	1630
4	230	85	115	M24	54	175	22	50x12	2360

Material - Carbon Steel.

When ordering specify:  
Figure No.  
Size  
Rod Dia D

FIG. 297



**BEAM CLAMP WITH WELDLESS EYE NUT**

Size	Max Flange Width	B Max	D	E	Max Safe Load Kg	I Beam Flange Width 'A'									
						76	100	127	152	178	203	229	254	267	
												'C' Dimensions			
1	203x16	153	M16	17	1040	205	201	198	193	191	182				
2	203x16	153	M20	24	1630	232	229	225	220	218	210				
3	267x26	165	M24	24	2360		304	300	296	296	289	282	275	272	
4	267x26	165	M36	34	5460		317	313	309	309	302	296	289	285	

Material - Carbon Steel:

Clamps size 1 and 2 are adjustable to fit I Beam flanges from 76 to 203 width and up to 15 maximum thickness.

Clamp size 3 and 4 are adjustable to fit I Beam flanges from 102 to 267 width and up to 26 maximum thickness.

The weldless eye nut is tapped right hand or left hand, as required.

When ordering specify:  
Figure No.  
Size  
Beam Flange Width A  
Beam Flange Thickness  
Thread: Standard Right Hand  
Left Hand supplied on request